



Instinct Guides You



Pugmill Lane, Chickerell, Weymouth £340,000

- Garage & Off Road Parking
- Superbly Presented Family Townhouse
- Westerly Facing Landscaped Rear Garden
- Three Double Bedrooms
- Bedroom One With Ensuite & Dressing Area
- Close To Attractive Country Walks
- Open Plan Dual Aspect Lounge / Diner
- Cloakroom & Family Bathroom
- Attractive Rear Garden With Access To Garage
- Amenities Nearby



Registration No. 08079158 Directors Mr Wilson, Mr Tominey

Courtesy Notice Upon using WilsonTominey as selling agents ensure we are made aware of contractual obligations you may be under. We can then proceed accordingly.

WilsonTominey Ltd
15 Westham Rd.
DT4 8NS

T 01305 775500
E sales@wilsontominey.co.uk
W www.wilsontominey.co.uk



Tucked away just off a cul-de-sac and overlooking a mature green space, this beautifully presented three-bedroom home offers spacious accommodation across three floors, complete with GARAGE, a landscaped west-facing rear garden, and off-road parking.

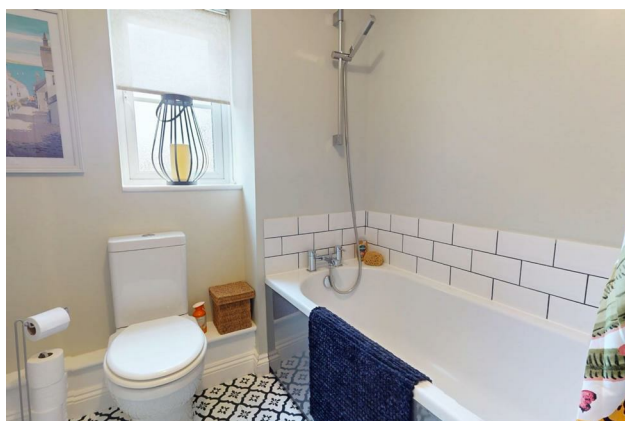
Accessed via a pedestrian footpath from Pugmill Lane, the property enjoys a tranquil setting with leafy views to the front. The entrance opens into a welcoming hallway with built-in storage and stairs rising to the first floor. A stylish cloakroom sits just off the hall, featuring a contemporary WC and countertop basin.

To the front, the modern kitchen enjoys pleasant garden views and is fitted with ample cabinetry, generous work surfaces, and integrated appliances including a double oven and gas hob. The standout feature of the ground floor is the open-plan lounge/diner — a spacious, dual-aspect room with double doors leading to the garden, creating a seamless indoor-outdoor flow. There's plenty of room for a variety of furnishings, making it ideal for both relaxing and entertaining.

Upstairs, the first floor hosts two well-proportioned double bedrooms, both enjoying views of surrounding greenery. The family bathroom is centrally positioned and finished with modern tiling, comprising a bath with shower over, wash basin, and WC.

Occupying the entire top floor, the principal bedroom is a true retreat. It features two dormer windows offering far-reaching views towards the coast and distant cliffs, a dressing area with skylight, and a sleek en-suite shower room with vanity basin.

Outside, the landscaped rear garden benefits from a sunny westerly aspect and includes a large patio, raised borders, and shingle pathways. A rear door provides access to the garage, which is equipped with power and lighting. To the side, a gated garden leads to the front of the property, where a lawned area with wrought iron railings completes the picture.



Room Dimensions

Lounge / Diner 15'2" max x 14'1" max (4.64 max x 4.30 max)

Kitchen 11'3" max x 7'2" (3.44 max x 2.20)

Cloakroom 5'6" x 2'5" (1.70 x 0.75)

Bedroom One 14'1" max x 11'10" max (4.31 max x 3.62 max)

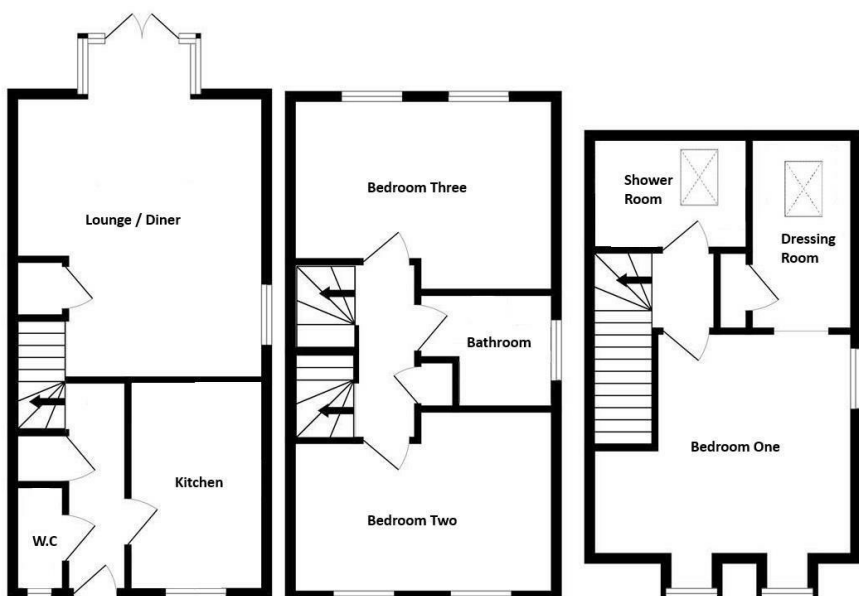
Dressing Room 9'5" x 5'4" (2.89 x 1.63)

Shower Room 8'1" x 5'10" (2.48 x 1.79)

Bedroom Two 14'1" max x 9'9" max (4.30 max x 2.99 max)

Bedroom Three 14'1" max x 10'1" max (4.31 max x 3.09 max)

Bathroom 7'4" max x 5'11" max (2.26 max x 1.82 max)



Energy Efficiency Rating		Current	Potential
Very energy efficient - lower running costs			
(92 plus)	A		
(81-91)	B		
(69-80)	C		
(55-68)	D		
(39-54)	E		
(21-38)	F		
(1-20)	G		
Not energy efficient - higher running costs			
		74	84
England & Wales		EU Directive 2002/91/EC	

Environmental Impact (CO ₂) Rating		Current	Potential
Very environmentally friendly - lower CO ₂ emissions			
(92 plus)	A		
(81-91)	B		
(69-80)	C		
(55-68)	D		
(39-54)	E		
(21-38)	F		
(1-20)	G		
Not environmentally friendly - higher CO ₂ emissions			
England & Wales		EU Directive 2002/91/EC	

Important Notice: Particulars are prepared for marketing purposes only and should not be treated as a statement of the condition of any building, fixture or appliance. All measurements, floor plans and lease/ maintenance are approximate and not to be relied upon. Purchasers should make their own checks before relying on any of the information provided herein. * For double glazing and gas radiator heating, it is where specified.